

GOLDBERG VARIATIONS



Set-up time: Minimum 4 hours

Rig-down time and get out: 2 hours

Times for performing: The show can be played **no earlier than 9.30**

Performances per day: Maximum 2 performances per day.
Time between shows: Minimum 45 min.

Duration: 45 minutes, with no interval.

Audience: Schools. Family audiences. Children, from 6 years old.

Audience size: Depending on the quality of the sight at the venues

Venue: Venue equipped with a sound system and audience seats.

Stage: Minimum 7 m (width) x 6 m (depth) x 3,5 m (height).
The children can sit on rugs / benches / chairs that the organizer provides in existing theater seating.

The stage floor: The floor must be **absolutely even** and **level** over the entire area given above (7m x 6m).

Heating and ventilation: It must be possible to adjust the ventilation and heating. Constant 19-22 degrees Celsius should be maintained prior and during rehearsals and performances.

Cleaning: Artists require a clean performance area. We therefore request cleaning of the surrounding areas of our performance area, i.e. in front of public seating at stage level, backstage, side stage, and dressing room areas to be done every morning of the performance days.

Dressing rooms: Access to at least one large dressing room with toilets, showers, mirrors, towels, drinking water and possibility to store the costumes. Access to laundry facilities to wash, dry and iron costumes after the performances. If your theater doesn't have these functions, you must be able to provide satisfactory alternatives.

Light and Sound: A sound system where to connect our mixer has to be provided. We bring all stage lights, a light console and a smoke machine.. These need to be connected to 230 volt power outlets.

Theater weights: We need 6 weights approximately 20 kg each.

Technical support: We need one stage manager and one stagehand for load in, set up and strike.

Catering: We wish for coffee with milk, tea, fruit and water upon arrival to the venue. We are happy if there are **vegetarian/vegan** sandwiches for the whole team (3 persons).

Photo: It is strictly forbidden for the audience to film or photograph the performance. No photography with flash is allowed during the performance due to the risk of being dazzled during an acrobatic element. All mobile telephones should be turned off before the performance. If by announcement, this should be done in the foyer/lobby and not in the auditorium, because music and artists are setting the atmosphere of the show as the audience enters.

On tour: 3 - two circus performers and one technical assistant.

Accommodation: Hotel; 3 single rooms. The team requires at least a 3 star hotel with free Wifi. Accommodation plan is based on agreement. No longer walking distance to the performance venue than 10 minutes. If the distance is longer, travel costs must be covered.

Transport The organizer provides transportation of luggage by flight, truck or boat cargo.

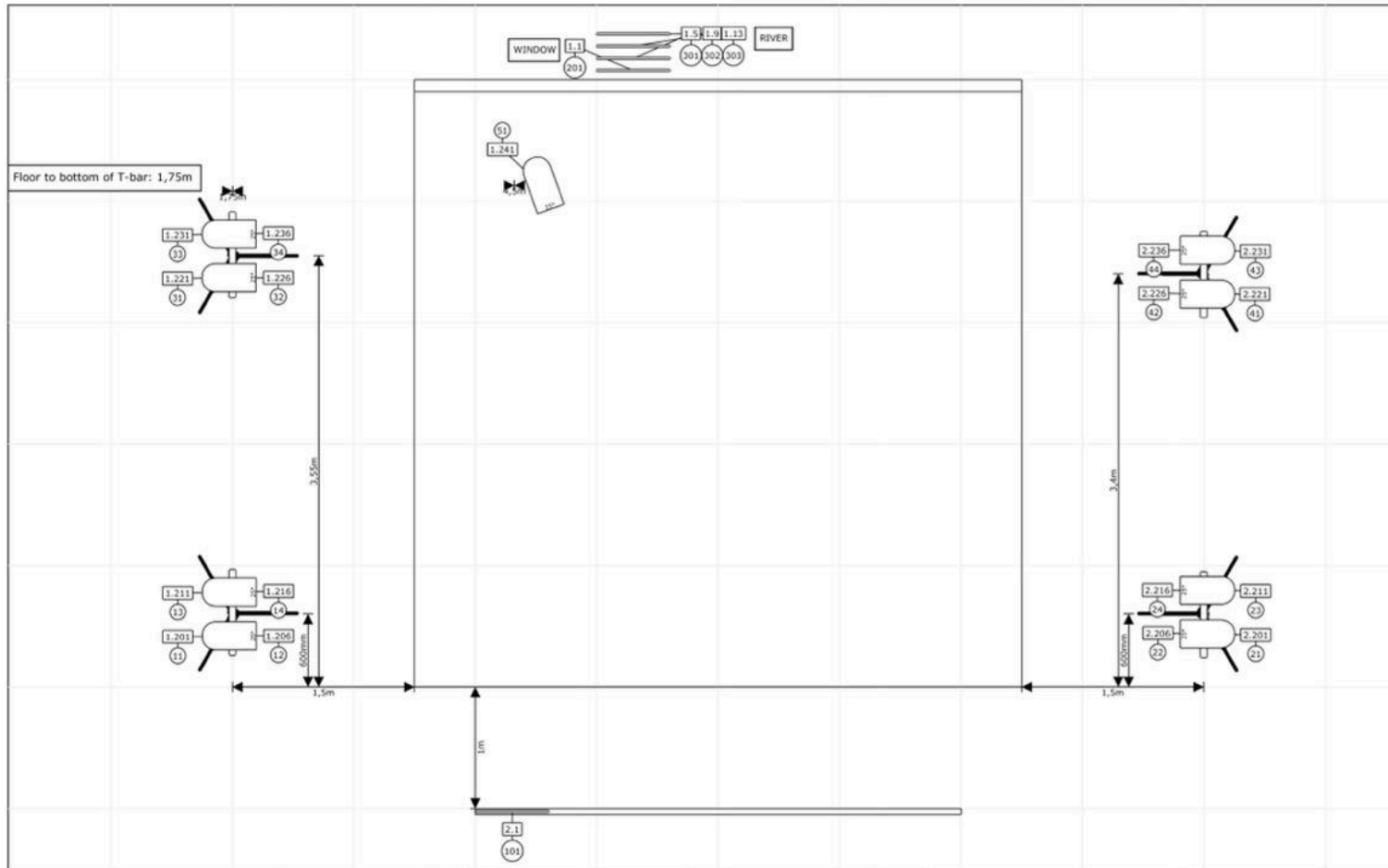
Parking Parking for the truck, near the venue, during the entire period of the performances must be organized by the organizer. Parking costs are paid by the organizer. For any reason: If, due to a lack of parking space, it causes us a parking fine, the organizer may be liable for payment.

Contract: The technical rider is part of the contract that is to be signed by Kompani Giraff as well as the presenter. Any failure in fulfilling it will be considered a breach of contract and may jeopardize our ability to perform.

TECHNICAL RIDER

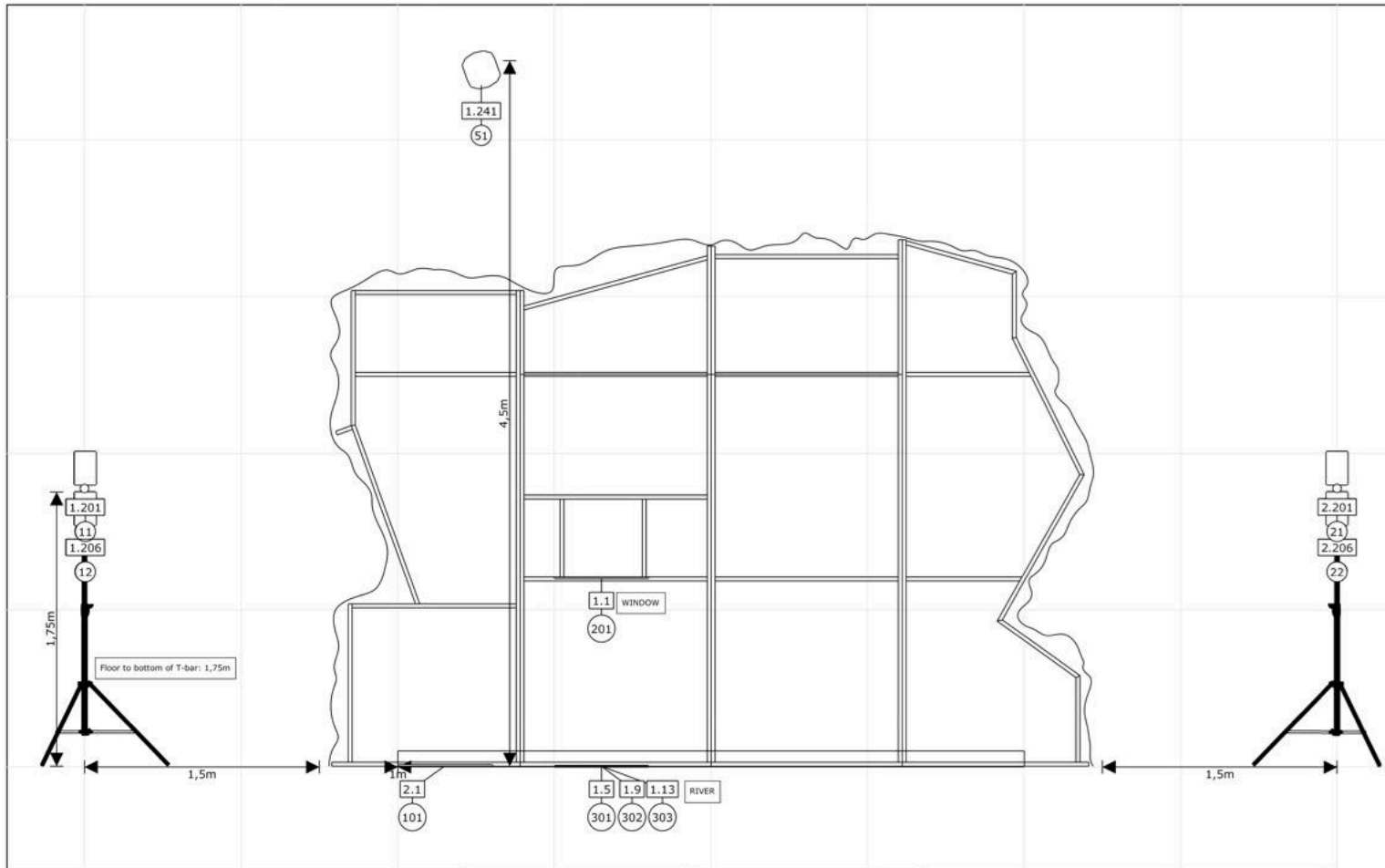
Last updated: 28 maj 2024

GOLDBERG VARIATIONS



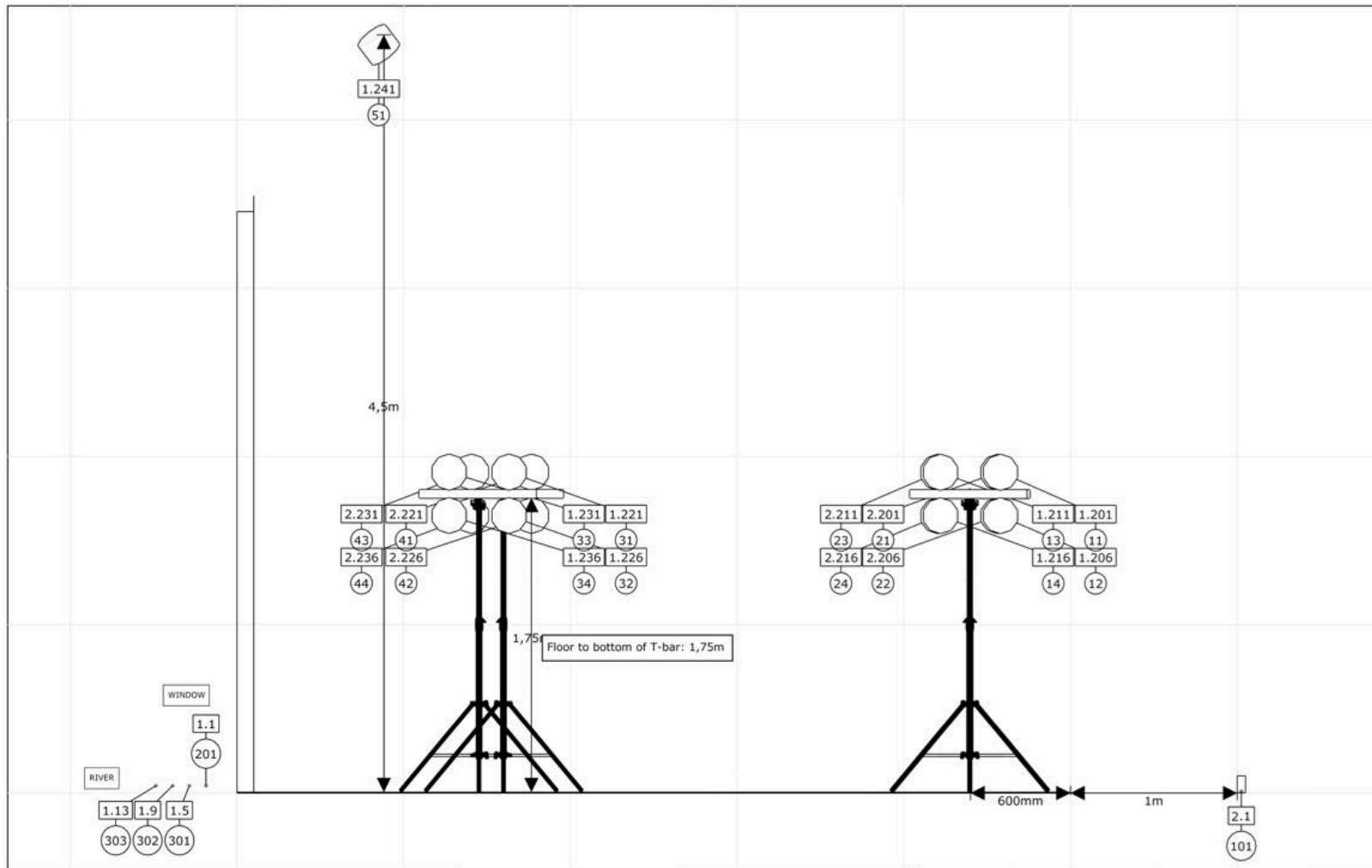
Project	Goldbergvariationerna	Lighting designer	Sofie Gynning	Project location	Kompani Giraff turné
Symbol key	Set designer		Sus Soddu	Project date	
	Director		Axel Adlercreutz	22/03/2023	
	Drawing version		04		
Tri Flat PAR Profile 18x3W RGB (17) LED Tape fixtures with driver (5)					

GOLDBERG VARIATIONS



Project	Goldbergvariationerna	Lighting designer	Sofie Gynning	Project location	Kompani Giraff turné
Symbol key		Set designer	Sus Soddu	Project date	22/03/2023
Tri Flat PAR Profile 18x3W RGB (17)	LED Tape fixtures with driver (5)	Director	Axel Adlercreutz	Drawing version	04

GOLDBERG VARIATIONS



Project	Goldbergvariationerna	Lighting designer	Sofie Gynning	Project location	Kompani Giraff turné
Symbol key	Tri Flat PAR Profile 18x3W RGB (17) LED Tape fixtures with driver (5)	Set designer	Sus Soddu	Project date	22/03/2023
		Director	Axel Adlercreutz	Drawing version	04